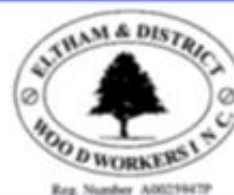


Eltham and District Woodworkers Club
The Eltham Woodworker
 Club Newsletter October 2022



EDWC Office Bearers

President	Vice President	Secretary	Treasurer
John Brownrigg	Colin Groves	Charles Camera	David Brooks
0409 145 516	0417 563 699	0413 481 699	0438 344 024

Board Members

Raman Rao		Aurora Messina
Peter Davey	Jane Hammett	Adrian Desfontaines



All correspondence to be addressed to the Secretary, P.O. Box 701, Eltham, 3095 or email: secretary@elthamwoodworkers.org.au

Major Sponsors and supporters



The EDWC is very grateful for the sponsorship of the Bendigo Community Bank. Please support our sponsors



President's Report

Hello all,

I hope you are well and enjoying being able to engage with the wider world again.

If you were able to attend the general meeting last Wednesday evening, you might have noticed that things were a little cramped, what with equipment and supplies stacked around the assembly room. The venue for the meeting was re-arranged several times, with our choice being to use the CFA meeting room next door, as we used to do, so after booking the Eltham Senior Citizens Hall from the Council, the CFA finally made contact and OK'd the use of their room.

On the night, we discovered that the opening codes they supplied didn't work. You'll notice that I avoided any mention of "operator error". Luckily, the builders had not yet started work so we were able to setup in our Club. Charlie will meet again with Council next week, to try to better define what site usage we might expect. We will keep you informed of progress.

So, here we are, at the busiest season for EDWC members. The Bunnings sausage sizzle, then raffle ticket sales at the Eltham Village, then the Whittlesea Show and finally the Eltham Festival.

We need volunteers to do two-hour shifts at Eltham Village over two days (October 29th and 30th). Jane Hammett is keeping the list so you can contact her via email (jane.hammett@hotmail.com) or phone 0408 195 965). Feel free to do a shift on each day.

We will receive 10 electronic passes for the Whittlesea Show (November 5th & 6th). We can print these I believe, if you prefer. The organisers allow us to sell small pieces which don't pose a threat to those who have purchased a trader site, and while we are not allowed to sell raffle tickets, they will allow us to advertise a website or a phone number. I'm not sure how well it might work, but it's worth a try. So if you're planning to demo or make small items for sale, contact Adrian Desfontaines (email: desfonta07@gmail.com or phone 0414795347).

OK, finally, the big one. The Eltham Festival (Opening drinks and nibbles on the evening of 11th November, with displays and sales open to the public on the 12th and 13th of November). New members may not yet know how to go about entering made items for display or sale. Again, Adrian is the contact as he can direct your query to the relevant person. All skill levels are welcome, so please consider displaying.

Final message for today, please sell your raffle tickets. If you need extra books, please contact Charlie Camera (camera_charles@yahoo.com.au or phone 0413 481699) for now.

Please also note that Covid-19 is still lurking about. While full vaccination may not prevent you from catching the bug, it should mitigate the symptoms.
Be well.

jbrownrigg@bigpond.com
0409 145516

Regards, John B.

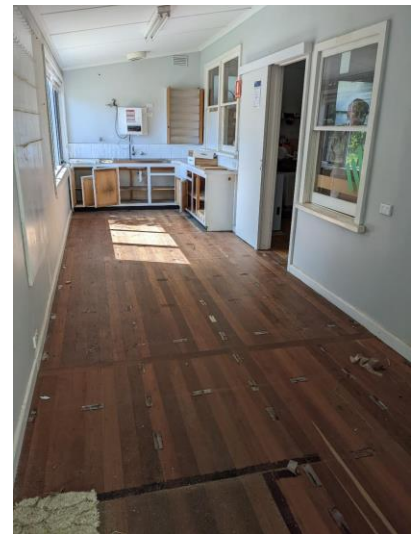
Around the workshop October 2022

The months activities are the last for some weeks as the builders moved in at the end of September for the kitchen extension. Due to SH&E factors and due to the removal of old asbestos sheeting and the need to secure the back wall, all workshop activities have been halted. ON Friday 30th a small group of members headed the call for assistance and all movable items were cleared leaving a sad and desolate space so different from the often overcrowded and lively atmosphere.

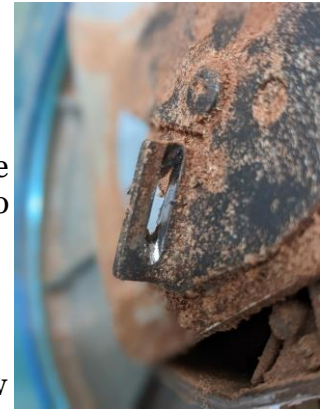
The building program entails knocking down the entire kitchen section which was once the veranda of the school master's house. The erection of a much larger area, that amongst other benefits, will be soundproofed as much as possible to allow members to congregate without being bothered by workshop noise.

It is hoped that when completed members will come to utilise the room for meetings and socialising even when not engaged in workshop activities.

A resumption of workshop activities is very much up in the air as builders' schedules are notoriously unpredictable. We have been told that all of October is out of consideration. The council project manager has instigated a regular meeting schedule between council, builder and a committee representative. The first meeting will determine the process for retrieving and returning equipment and materials for our exhibition whilst we are locked out. I will advise members of progress towards a resumption as often as possible.



On the workshop running list there were very few problems during the month save when the increasingly cranky mitre saw threw a final spit and refused to allow the blade to be lowered. The problem was caused by extreme wear on the strike plate against which the cover opening lever pushed. It had worn so much that the lever protruded out the other side. Either Makita did not test this component enough before production or – we are very, very active and have utilised it beyond their expectation. A temporary fix enabled it to continue to be used and a new part will be ordered for our return. And, as requested by the turners, the high-speed grinder has a new aluminium oxide wheel.



Paul Rushton also got involved with the laser engraver and now joins a few members that can assist with laser engraving your work. A good example of what the engraver can do is in the photo showing our emblem on the outdoor seat being prepared for the exhibition raffle. It gives an otherwise anonymous piece of excellent craftsmanship some character and its provenance will always remain known.



Charles Camera

Mentoring Monday - October 2022



The big highlight of the month was when Jane got to finally glue up her mammoth project of four bar stools. In the picture it is obvious that she is very pleased with her effort especially after the first coat of oil. Starting with very little WW experience she has truly come a long way but I am sure that the next project will be something a little less challenging. Look out for them in our exhibition! Many of you will have seen Jack Mokaji's beautiful carving in last month's newsletter and on our Facebook page EDWC FB Page.



◀ **Jack's finished work from last month.**



The posting went almost viral as members commented and tagged their friends and during the month Jack attended the mentoring session with the kind assistance of Evan Gellert who took the time to drive him in. Of course, there was no mentoring to be done at all – how does one mentor a master carver? Instead, we all checked out his techniques and astonishingly – it was the first time I have ever witnessed carving partly done with a router – what a revelation. Don't

believe it well check the photo. The new work is a monster and hopefully will be finished for the exhibition as well.



Jack's current work in progress

Some members have asked if we could run the old-style mentoring workshop where a single project is attempted by attendees instead of each doing their own work. This was done when Dave Mitchell first started the session and can again be run – all I need is enough interested starters and it will run concurrently – let me know if interested. The project used to be a very nice step stool which can be the project again or we can all vote for something else.

Not quite mentoring, but of interest to new turners who are often faced with turning outside their skill competence when starting out is this account of my experience in such a situation. Some time ago I raised a request at a monthly meeting for someone to turn a number of drawer knobs out of red gum for a local furniture maker. The knobs needed to match existing ones on an old piece and were not available commercially. As there were no takers I once again found myself doing it so as not to disappoint. A lack of skill and the need to have every one identical meant that, as I often do, I had to resort to cunning. The first few I tried took a very long time and were anything but identical. I eventually worked out how to turn the hemisphere OK but the spigot section was tedious in every way. The solution was to grind the reverse profile on an old chisel as in the photo. This scraped out nearly all the required shape in just a few minutes leaving the spherical section and some sanding. So who would know if not told and does the end justify the means – it sure does when up against it!!



Charles Camera

From our Vice President Colin Groves: THE GROUNDS AT EDWC

In an effort to keep the grounds around our clubrooms neat and tidy I would like to have the grounds whipper snipped and mown six times a year. To do this I would like to form 20+ teams. Each team would consist of two individuals; one doing the mowing and the other doing the whipper snipping. Currently I have 15 teams. If I can get over 25 teams, you will only have to do your bit once every couple of years. Let's keep our clubrooms looking good or even better.

Colin Groves

Carving Group Friday September 16 2022

We had a healthy group of 10 carvers on hand for the Carving Group today and this does not include both Jane and Maik who were both away with other commitments. Jason Buttigieg (one of our new



members) after a brief absence is making great progress concentrating on a number of spoon carvings. Evan and Jack were both busy with Evan working on a relief carving of a platypus and assisting Jack with cutting out starting shapes for the latter's newest projects which include a

very impressive and complex relief carving of the Last Supper together with a lovely pod of dolphins. Steve continued with his 3D Dinosaur carving (apparently it is a 'Barosourus' !) and John continued on with his gnome figurine totem destined to top off a walking stick. Meanwhile, Kevin continued work on his elephant carving and Alwyn was finishing off his latest Welsh love spoon for a family member as well as getting stuck into a new relief carving of some rather cute cats. Hank was taking a break from his spoon carvings and worked on a 30cm high abstract carving in his favourite choice of wood: osage orange. It is a rather interesting shape and Hank enjoyed discussing its various attributes and welcoming input from others as to how the abstract shape impacted them. Meanwhile, we welcomed back David from visiting family up north. He spent much of his time making finishing touches to his owl. I continued work on my latest 'wise man' carving after finishing a little gnome from recent sessions.



Overall, our Carving Group continues to grow with total of 12 members if all are present.

Rod Gorfine

November Exhibition Details – Adrian Desfontaines

For those of us who braved the elements last night, below is a summary of what was discussed at the general meeting.

- Firstly, I'd like to **thank Keith Hawkins for volunteering to help Colin Groves** with the four large road signs which will be positioned at the below sites on 28th October
 1. Northeast corner of Main St and Collins St, Diamond Creek
 2. Southern corner of Main Rd and Park West Rd, Eltham
 3. Diamond Creek Rd, Greensborough nature strip on the northeast corner at Civic Drive
 4. Northeast corner of Ironbark and Yan Yean Roads
- **We need another volunteer to help Kim Webster** with the smaller signage/promotional leaflets
- If you haven't entered your exhibition entries yet please do so via the online form:
[Click here to register an exhibition entry](#)
or ask Peter Davey for hard copy.

The invitations to dignitaries and external demonstrators for the Friday exhibition opening to members and their partners are currently being sent out and we already have **confirmation from Mayor Frances Eyre (guest speaker) and a long-time attendee and supporter Vicki Ward.**

For the new members of club and established members who need a refresh (following three long years 😊) **please read the following carefully.** [These directions are by no means exhaustive so please feel free to ask experienced club/committee members on the day]

Thursday Morning Set Up (10th November)

We need **2-3 volunteers** to meet members with articles for the exhibition from **7.00am till 10.30am** (Sales table set up is Saturday 8.00 am).

For those of us working or for some other reason who can't make this slot, please reach out to fellow members who can deliver your exhibits. The same applies for the removal of exhibits Sunday 13th after 5pm or Monday morning the 14th November.

In addition to the volunteers receiving exhibits, we will also need 3-4 volunteers bring up the freshly painted plinths from the storage room beneath the reception centre and also a similar number to return them on Sunday after the close of the exhibit.



View of our 2018 exhibition

Isobel Clement (0417 337 163) has yet again kindly agreed to help from 10.00 am with the set-up/presentation of the exhibition room, which is the large room on your RHS as you enter the Eltham Community and Reception Centre 801, Main Road Eltham.

Please be prepared to be available beyond the initial delivery slot i.e., **10.30am** as they will be plenty of assistance required for the numerous jobs required to bring the exhibition together.

Friday 11th November Exhibition Opening (for members, partners and invited guests)

Can I ask that people with surnames from **A-R bring a savoury plate** and those from **S-Z bring a sweet**. Please also consider that there may be some people with dietary requirements, including vegetarians and gluten-free etc. Alcoholic and other beverages will be provided on the evening.

If you can attend the Friday evening, please be there by 7.00pm. Our President John Brownrigg will thank and address the audience followed by our guest speaker, Nillumbik Mayor, Frances Eyre.

During the Friday evening, voting for and the announcements of the winners of the Max Jensen (most improved woodworker as voted by their mentor/session leader) and Barry Lay (most popular exhibit as voted by peers) awards will take place. Voting forms and boxes will be part of the Thursday set up.

Saturday Morning **8.00am-9.00am**

We will need 20 plus members to be there early to help with the set up of the

- **Sales table** (6 trestle tables, tablecloth and Eftpos machine/money tin with float, entry form stickers etc) set up near large glass foyer up and to the right of the exhibition room. Please see **sales table entry form attached please print off and fill out prior to the day**
- **Demonstration/workshop area** (large room with stage on LHS of sales table area) Demonstrators and volunteers required to tape the tarpaulins down & put up required safety barriers etc.
- Please note that people who volunteer to help with Wes's Workshop (Insect Hotels) are required to **bring their current working with children card**
- There is an **attached PDF of all the required workshop equipment**

From 9.00am -5.00pm Saturday and Sunday the Exhibition is open to the public.

- At all times over the weekend, we would expect between 20-30 club members to be available to multitask, so people are **not left alone with a single responsibility e.g., the sales table, raffle ticket sales and returning the plinths to storage etc.**

To make yourself visible/ instantly recognisable to the public for sales assistance, questions about the exhibition and club membership etc **please wear your club's name badge** (club clothing is optional)

- To capture how we could better promote/execute the annual exhibition Kim Webster has developed a **straightforward short survey** that we will be asking volunteers to approach the public with.
- In combination with the survey, we will also have some **roving photographers** to capture the interaction of the public (you will need to ask permission) with the exhibition, workshops, and sales table. These images and data from the survey will be used next year when we approach sponsors for support.
- The raffle will be drawn at 4.00pm on the Sunday afternoon (**please make sure to return your sold ticket stubs and monies before the exhibition [see Peter Davey email] and don't be shy to ask for additional raffle ticket books as we have outstanding prizes this year and we need to make up for two lost years of sales**)
- The exhibition closes at 5pm on Sunday and once most tasks including the returning of plinths to storage have occurred there will some celebratory post-exhibition drinks.
- Any exhibits or materials which can't be removed on Sunday evening can be picked up first thing on Monday morning.
- Colin & Keith need to remove the road signs by Monday the 14th November.
- Any questions or glaring omissions please let me know (phone or email) & I'll include in the next update.

EDWC Exhibition Check List

First Aid Kit

Club information leaflets for prospective member

enquiries

Tarps to cover floors

Duct tape to secure tarps. (6 rolls)

Display screens and display stand

Club signage - signs - banners

String, cord, flexible wire for hanging signs and display

Items

Coffee, tea, milk, sugar and biscuits

Electrical power leads, long and short

Power boards

Work benches, one with a vice for carvers

Work tables

Sharpening wheel/grinder

Clamps

Screwdriver set

Stanley Knife

Pliers

Shifting spanners

Hammers

Handsaw

Lath on stand. (Safety screen should be attached. For use by Club scheduled demonstrators.

Portable safety screens for lathes

Lathe faceplate, chuck, tightener, gouges, measuring instruments

Timber Blanks

Lathe safety gear, Visor etc.

All Club electrical gear (machines, leads, etc.) must all be currently tagged and tested.

All demonstrators' electrical gear (machines, leads, etc.) must all be currently tagged and tested.

Demonstrators normally provide own tools/machines and materials

Machines normally provided by individual demonstrators

Lathe, Scroll saw, Pyrography units.

[Adrian Desfontaines](#)

Pyrography Group Sunday 25th September

A smaller group than usual this month. Maiké was out of action and couldn't come, and Kevin had got himself caught up in "family activities" because it's the school holidays. Both were kind enough to let me know, so I fronted up expecting only Beryl to join me, and fortunately for the sake of this report, she did.

Beryl had cornered the market on spoons and spatulas the easy way. Went to the shop and just brought a pile of them cheap. Don't know what the timber was, but it looked terrific, and the raw wood finish was like glass. No preparation required, Beryl was straight into transferring patterns onto them ready for demonstrations at the annual Exhibition.

My task for the day was to finish the "gear box" I have been working on lately. Had done nothing to it since the last Pyro session, so was determined to get it done. But we did so much talking and catching up, I nearly didn't manage it. But it is finished now, at least the burning bit. Just have to paint it and seal it, then I'll put a photo in the newsletter of it.

To finish off the day I started a test piece on some dinosaurs I want to burn. But didn't get much of that done before we decided to pull the pin. But we had a good day, that's all that matters.

Steve Mitchener

Show and Tell



An amazing looking piece of "delicate" turning by Eric Gunstone to transform that strange looking red gum burl on the left to the rather artistic looking vase seen here in the two views.

"The Burl was kindly provided by a member of the Whittlesea Men's Shed, as can be seen in the 'before' picture it looked a bit like Hogwarts sorting hat, but alas it offered me no magical powers, instead it offered me a challenge to turn it into something attractive or useful.

That something ended up as you see it now as a more decorative than useful vase." **Eric Gunstone**



More Show and Tell

I finally got around to making a proper rack for some of my clamps. It's mounted on the back of the shed door, was easy peasy and works a treat.

Peter Davey



Market Place

For Sale:



Table only.

Solid wood in perfect condition.

\$250 Contact Charles Camera on

0413 481 699

ELTHAM & DISTRICT WOODWORKERS Inc.

Minutes of the Members Special meeting and General meeting held on September 11th at the clubhouse Yarrambat Starting at 11:30 am

Attendance 34 members and 10 proxy votes held by the President

The Special Meeting was called to consider the proposal for alterations to the club's constitution to wholly incorporate the **Model Rules 2012** of the department of Consumer Affairs.

[Model rules for an incorporated association - English \(Word, 198KB\)](#)

The president explained that the model rules which are minimally different to our present document but which are totally consistent with current laws would be adopted in whole. There would be :

- **the association's name** - no change
- **its purposes** (removal of clause (a) referring to taking over the club's unincorporated name and finances).
- **its financial year.** (no change)

Moved – J. Brownrigg sec. B. Wattling

Proposal was carried on a show of 33 hands and the 10 proxies exercised by the president with one abstention.

Special meeting was declared ended at 11:44

[General Meeting – following on.](#)

Minutes - minutes from the May Meeting were taken as read.

Moved – J. Brownrigg sec. C.

Groves

Treasurers Report for the period August 1 to 31st was presented by C. Camera.

Revenue	\$300	all due to new members fees
Expenditure	\$1,736.41	Mostly tools and equipment purchases and insurance changeover.

Net for the month -\$1,436.41

Bank account balances were read out. **Moved C. Camera sec. G. Oliver - Carried**

Correspondence

A large list for the period from end may to end August where correspondence of particular interest to members has been circulated by email or included in newsletters. Notable exchanges pertaining to members were -

VCAT action against Eziduct P/L now suspended as the company has been wound down and has no assets.

CWC notices -notably insurance.

Nillumbik council – various matters mostly dealing with planned kitchen extension.

Notices from the VMSA and AMSA - most relevant grant programs.

Newsletters from other clubs – most interesting circulated to members.

A large number of enquiries regarding membership (20+).

Moved C. Camera sec. B McDonald - carried

General Business:-

- Wattle festival – generally a success with ticket sales over \$400 but too few volunteers turned up to man the stands.
- Whittlesea show – planning in train. The club has been allocated a tent near the usual site. The sale of minor items permitted but raffle ticket sales are not. A list of machines and requisites to draw up and W. Weight will transport- volunteers needed to help. A show of hands indicated several volunteers to man the stand.
- Exhibition – A Defontaines reported planning well in hand, signs advertising to go up from the 28th – some plinths have been painted but volunteers needed to finish the remainder. Two EFT terminals have been ordered from the Bendigo Bank and D. Brooks to buy a Square that will remain with the club.
- Bunnings sausage sizzle – October the 23 rd. More volunteers needed. C Groves volunteered to manage with assistance from P. Davey.
- J. Winkett gave an update on the Kitchen extension – issues with the Kitchen grant as it has been extended well past the due date date for completion. Construction start imminent. Futures group to meet and discuss next development plan.
- P. Rushton has resigned from running the Healthability Project – M. Thompson volunteered to take over- needs an assistant.
- Hearing protectors missing from the workshop.
- Tormek sharpening system acquired and will be installed in the sharpening area. A training program will be run to ensure it is used properly. Members urged not to use it for grinding as it unsuited to any task other than fine sharpening. High Speed grinder needs new wheel – C. Camera to acquire.

- Wes Workshop – items completed for the year.
- A number of surplus tools to be cleaned up and offered for sale to members. Items include several routers, old slow speed sharpener.
- Final warning given re access safe for key. Code to be changed immediately.
- Colin Groves has instituted an outdoor maintenance roster and will manage appointees.
- Additional trainers needed as many new members coming through. C. Camera to recruit and “train”.
- J. Brownrigg reiterated call for members to make new members feel welcome especially with self introductions at all meetings.
- S. Mitchener to attend Shepparton Woodies meeting.

Show and Tell

- R. Shepherd offered wood from his Tree lopping business.
- B. Watling showed a homemade off centre turning jig and offered her unused blind dovetail jig to the club.
- G. Oliver showed a curved serving board made from a very large number of wood strips.
- M. Thompson advised that he would place a number of redgum fence posts in the club for members to take.
- H. Tyler showed a sandpiper carving from osage orange.

Meeting closed at 12:41 for a BBQ

Newsletter Contributions

Thank you to: Adrian Desfontaines, John Brownrigg, Charles Camera, Steve Mitchener, Eric Gunstone, Colin Groves, Peter Davey and Rod Gorfine.

All group leaders and individual members may contribute to the newsletter with any relevant monthly group report or items of interest to the club. Please make them brief and include photos where appropriate.

Show and tell items and Sale items are welcome, with pictures if possible.

Send to: frankco1@tpg.com.au

Ph. 0427 964 254

