

ELTHAM AND DISTRICT WOODWORKERS CLUB

The Eltham Woodworker CLUB NEWSLETTER

MARCH 2021



Reg. Number A0025947P

EDWC Office Bearers			
Martin Lawley	John Brownrigg	Charles Camera	Peter Davey
President	Vice President	Secretary	Treasurer
0412 385184	0409 145 516	9434 2269	9439-4889

Board Members		
Kim Webster	Raman Rao	David Brooks
Rado Staric	Adrian Desfontaines	

All correspondence to be addressed to the Secretary, P.O. Box 701, Eltham, 3095 or email secretary@elthamwoodworkers.org.au

Vice-Presidents Report:

Welcome all.

As you may know, Martin is moving to Northern Victoria and I have been asked to take up the Presidency and have expressed my willingness to so do. Thanks to Martin for his valuable input as President, and we wish him good luck up North.

2020 was a terrible year, no news there, but 2021 is looking a lot better. The Rotary Eltham Festival looks like it's going ahead this year, save any further upsets. Adrian DesFontaines is the leader of the Exhibition Committee so let's get building exhibits. He'll be looking for assistance also.

We have requested suggestions for new equipment and notes on what needs repair.

We are also planning to run some more BBQ "just because" social functions.

The Management Committee has been meeting regularly via Zoom and face to face when allowed. We have decided to run a separate sub-Committee to look at equipment requirements, to look at other major purchases also to look at a five year plan to make suggestions to the Committee about changes in requirements in many different areas.

A big thank you to Charlie and Peter for the continued frenetic work in their respective positions, and a big welcome to David Brookes to the Committee.

I'd also like to thank John Winkett for his continued input.

Frank Camera has taken on putting together and distributing the Club Newsletter. He has big shoes to fill, following Beryl Watling. Thank you Beryl for your long, dedicated and almost word perfect delivery of Club news to all.



Major Sponsors
and Supporters



The EDWC is very grateful
for the sponsorship of the
Bendigo Community Bank.
Please support our sponsors.



We were visited last Thursday by two staff members (Kellie and Janine) from the Bendigo bank in Eltham. They presented us with a cheque and have reaffirmed their support of our Club. Thanks to Mark Thompson for being the photographer (twice).

Our ongoing involvement with the Men's Shed Association both national and state has been very valuable in that we have already received some welcome funding and provided some like minded people to talk to. So, welcome back to all.

Warm regards, John Brownrigg

Monthly General Meeting 7th March

Almost a year to the day the club had it's first Monthly meeting on the 6th of March. Possibly for the first time ever it was scheduled as a daytime meeting and was combined with a BBQ on what was a superb day with bright sunshine and mild temperatures. There was a good roll up despite an inadvertent miscalculation – right in the middle of the long weekend. Due to our inability to use the CFA meeting room – still locked out because of Covid good use was made of our assembly room and recently acquired fold out chairs.

The BBQ was most enjoyable as many of us had not seen many of the attendees since before the big lock down last year. Our newly acquired BBQ was put into service and all went without a hitch especially as it was ably operated by our new member Wes Radalski. Thanks to Peter Davey who purchased the chairs, BBQ and the food and to John Brownrigg and Ramon Rao who also assisted with provisions and preparation. With such a success we are possibly going to see more such social events possibly again combined with monthly meetings.



Post meeting BBQ

and a very social time.

Good food, good weather, good friends.

New member Wes Radalski

Doing great work at the club's new BBQ



Attendees at the pre BBQ monthly meeting, held in our clubrooms as the usual CFA building meeting room is still out of bounds.



New members

We have a number of new members already signed up and many more in the process of doing so. We welcome the following who are now on board - Justin Aisman, Wes Radalski, Andreas Sederof, Lyall Demitrios, Lisa Baldini, Eugene Kokachev.

Review of Insurance

The committee has been reviewing our club's insurance which we access through the Council of Woodworking Clubs (CWC). A recent communication from the Victorian Men's Shed Association prompted the review as there were many points of difference between the cost and cover offered through them compared to that offered by the CWC. The first and most noteworthy point was that whilst we paid around \$5 per member for current coverage, the cost from the VMSA source was \$25+ dollars. A preliminary review indicates that we are well covered in all our activities which is not surprising as there are 141 clubs as members of the CWC and the matter of adequate coverage would have had careful consideration by the CWC board.

The CWC however does not discuss suitability or adequacy of the policy offered – that is our committee's obligation. In that regard the committee will continue to investigate the matter to make absolutely certain we have the best coverage at the lowest possible cost.

The full policy document for our insurance can be found here:

<https://www.google.com/search?client=firefox-b-d&q=Steadfast+GL+1+--+2014>

The committee welcomes any comments.

Around the workshop March 2021

Wood Dust toxicity and health concerns - Safety in the workshop is of paramount importance to all our members. The upgrade to our dust extractor will not only address adequacy to service our expanding machinery but also to improve safety. In Australia wood dust is classed as carcinogenic (liable to cause cancer) and prolonged exposure can lead to health issues. Preventing exposure is therefore a serious concern and we should all do all that we can to avoid exposure. The sanding room is of particular concern as whilst we have an air cleaner (as we have in other parts of the workshop), the dust load is very high and a face mask should be used whilst working there. The same is true when working at home where dust extraction may rudimentary or inadequate.

Toxicity is another matter – one may wonder why wood is often toxic – the reason is actually simple. Trees are under constant attack by insects including borers and over time nature develops toxic chemicals in the wood to hinder or prevent them. Some trees are extremely toxic such as Yew and manchineel tree although you are extremely unlikely to come across timber from either of these. How toxic? Yew is extremely toxic and the active chemical in Pacific Yew is used in cancer treatment so toxic is it to developing cells. The manchineel is another level again – so much so that one cannot even stand under it when it rains – enough toxic material comes down with rainwater as to severely injure anyone on which it then contacts.



So then to the timbers that we do see.

<i>Common name</i>	<i>Botanical name</i>	<i>Possible toxic effects</i>
Mulga	<i>Acacia aneura</i>	Headache, vomiting, irritation, may contain a poison
Dead Finish	<i>Acacia tetragonophylla</i>	Wood splinters and thorns cause skin irritation, dust causes dermatitis
Blackwood	<i>Acacia melanoxylon</i>	Dermatitis, skin reactions, asthma
Native Pine, Wh. Cypress Pine	<i>Callitris glaucophylla</i>	Dermatitis, swollen eyelids, asthma, nasal cancer Irritation to mucous membranes, boils, inflammation
Blackbean, Moreton Bay Chestnut	<i>Castanospermum australe</i>	Irritation to mucous membranes, nose, mouth, throat, genitals and armpits commonly reported. Note: This species is now listed for restricted use in commercial workshops.
Australian Ebonies and Persimmons	<i>Diospyros species</i>	Causes skin eruptions especially from splinters
Miva Mahogany Red Bean	<i>Dysoxylum mollissimum</i>	Congestion of lungs. eye and mucous membranes. Headaches, nosebleeds, appetite loss
Sugar Gum	<i>Eucalyptus cladocalyx</i>	Eye irritant especially from sap
Coolabah	<i>Eucalyptus coolabah</i>	Skin irritation from bark and dust.
S.A. Blue Gum, Yellow Gum	<i>Eucalyptus leucoxylon</i>	Irritation of nose and throat
Jarrah	<i>Euc. marginata</i>	Irritation of nose, throat and eyes

The full listing is here - <https://www.wood-database.com/wood-articles/wood-allergies-and-toxicity/>

PPE in the Clubhouse

Some time ago the use of PPE (personal protection Equipment) was emphasised and for a time the conformity to the club's rules improved. However compliance is not nearly at a satisfactory level and we again ask that the following be observed-

Eye protection is mandatory around all machines with fast spinning components – eg router, table saw, drill press etc. Whilst it is preferred that members bring their own gear, there is always club equipment available.

Masks are to be worn when sanding in the sanding room.

Hearing protection when in the machine room.

Bin for refuse

After many attempts John Winkett has magically succeeded in getting a council bin for our waste. Please do not put materials not normally suited for compost in it and groups meeting on the put out day and bring in please help by managing it.

New car ??

The Victorian Men's Shed Association has several sponsor agreements in place and one may be of particular interest to members. Members of Mens Sheds may get a very significant discount on a new Hyundai vehicles as they have negotiated **national fleet discounts**. The details and the process is set out here -

<http://www.vmsa.org.au/hyundai/>

Bendigo Bank VISIT and PRESENTATION

Last Thursday, two staff members from Bendigo Bank Eltham (Kellie and Janine – see photo) visited our club to present a donation cheque.



Bendigo Bank (the fifth “big” bank) is a long term supporter of not just our Club, but many other community organisations as well. Bendigo seems to me to have a greater feel for involvement with their customers and as such are worthy of your consideration for your banking needs, along the lines of supporting those who support us. That’s Kellie on Charlie’s right and Janine on his left.

Contact details are: ph 94390188 or kellie.jones@bendigoadelaide.com.au

[Eltham Branch: 958 Main Road Eltham](#)

ANTIQUE & COLLECTABLE HAND TOOL MARKET

The Hand Tool Preservation Association of Australia Inc hosts the:

Antique & Collectable Hand Tool Market

Sunday March 21st 2021 9 am to 2.30 pm

Fifty + Tables of Collectable & User Hand Tools.

Venue: National Steam Centre

1200 Ferntree Gully Rd Scoresby Vic 3179

This is an outdoor event.

Thursday Arvo Turning Tragic - February

It's been a pretty quiet month here at the old turners shed with not much action happening, fair bit of chat but not an abundance of turning. Numbers are pretty reduced down to 2 ~ 3, Rod, Eric and Tom plus Tony and your faithful correspondent, that'd be me.

As you may know our trainer/mentor Graham Skinner has pulled up stakes and moved to Colac, I know we're all sorry to see him go, it was enjoyable working and chatting with Graham and he has a wealth of experience that he was more than happy to share if you were prepared to listen. All of us from the Thursday group (and probably quite a few others) wish him well for the future.



Enough of that maudlin sentimentality, onto important matters - Turning! As you may have noticed the club has purchased a further 3 Vicmark VM100 chucks and several live and dead centres. This coupled with the club's collection of surprisingly high quality turning chisels means all the lathes are fully kitted out and ready for action. The club has also, a couple of years ago, invested in some high quality Tormek sharpening jigs, if you have been signed off to use the club's lathes (if you haven't please don't use the lathes, it upsets the safety officer - whoever that is) but haven't been shown how to use these jigs for sharpening, please come in on a Thursday afternoon for a demo OR let either a committee member, Tony Orbe or me know and we'll arrange a convenient time to run you through the care and feeding of a Tormek sharpening jig it should take well under an hour and extends the life of the tools.



Onto actual turning. As it's only February (during the apocalypse) not much has been happening. Tom has been doing a nice job of turning a couple of egg cups, sorry no photo's. Eric has been turning a Witchety grub bowl, the thing is full of witchety grub tracks and the 'saw' dust they leave behind, finished with shellac I believe, photo below, from the bad side apparently. Rod has been working on a series of twig pots that are all the rage in the Gorfine family. Not sure about Tony, I think a lidded box or a small vase, we'll find out in the coming weeks and there'll be a photo of some description. I've been hammering away at honey dippers and more honey dippers.

Anyway, that's about it. Thursday afternoons from 1pm to around 4, we've got spare lathes so if you've ever wanted to turn a rolling pin, paper towel holder or a magic wand come on down we can get you started. Maybe not a magic wand, we've run out of griffin feathers.

STEVE HOOD

Scrolling Group Report

First scrolling session for 2021 was on Saturday 6th Feb., that's the first scroll sawing session since, I think March, last year. Having only used the saw twice before, I almost couldn't find the on button after such a long break. At least that way I wasn't going to break too many blades.

We were ably led by young Mr. Mitchener, who managed to leave his scroll saw at home for some reason that remains obscure, he contented himself by carving a small lump of wood into an even smaller lump of wood and offering helpful advice where needed as well as a few pieces of unhelpful advice whether they were needed or not. Always a good day working with Steve.

With 3 attendees (not counting our fearless leader), Maïke, Tony and myself as the complete newbie we had a rather enjoyable day with a very slow start, I don't think anyone actually fired up until around 9:45, just in time for smoko ;-) (glad I'm not being paid piecework).



What did we do you ask, the standard answer - not much. Maïke worked on a fork and spoon carving, I'm not sure what they're for but they're a bit on the large side must be for some heavy duty stirring, she also showed us 1, and only 1, photo of her granddaughter, admirable restraint, and she is absolutely gorgeous. Tony was cutting out some puzzles, he also bought in some of the stuff he worked on during the shutdown - some really nice puzzles and a hand cranked "windmill" for want of a better word, the windmill has hand cut ply gearing and an input shaft inside an input shaft each with their own separate gearing, contra rotating "blades" beautifully fine and detailed work, evidently getting the gears to mesh was rather involved! I cut out blanks for a honey pot I intend to glue up and turn, so nothing to see there .. yet, I also cut out a racing car puzzle just because I'm a big kid.

Steve and Tony had a chat with me about 3D or Compound cutting towards the end of the session explaining some of the intricacies which was fascinating (I'm easily amused) and maybe next time I may give that a try with some hands on tuition from Obi Wan Mitchener.

TONY'S "WINDMILL" (those blades spin in opposite directions.)



TONY'S LOCKDOWN PUZZLES

The club has 4 good quality scroll saws – I counted them - so if you've never done it come along and have a crack (bring your lunch).



In progress double (reef) knot

STEVE'S WOOD REDUCTION PROGRAM.

Finished single (thumb) knot as comparison.

STEVE HOOD

Newsletter Contributions

Thank you to: Charles Camera, John Brownrigg, Steve Hood

All group leaders and individual members may contribute to the newsletter with any relevant monthly group report or items of interest to the club. Please make them brief and include photos where appropriate.

Show and tell items and Sale items are welcome, with pictures if possible.

Send to: frankc01@tpg.com.au

Ph. 0427 964 254

A Litany of Errors

In my shed, I have a stack of boxes, as yet unfinished, as the photo shows. Some have been there for a long time, displaced in priority by other issues and builds (Lego tables for grand kids are most important). The reason for this accumulation of boxes is that I have been playing with various finishes, styles, trims, build methods and timbers and some of the things I've tried didn't work as I'd have wished.

The net result is that I have many box carcasses that I have to repair or modify because I didn't get something right, didn't complete a necessary process or more often, had no idea what a good result might look like.

BUT, I am going to remake or redesign these to clear my bench and learn from the experiences. Some test boxes are already in use for storage (router bits, drill bit box etc.). Some are coated with new finishes in varying densities of application. I'll sand off and re-do what I can, because I hate waste, particularly of timber. I won't give up on what I've done so far, even if the final use for a box is less glorious than initially planned.



Never give up, Right?

Cheers,

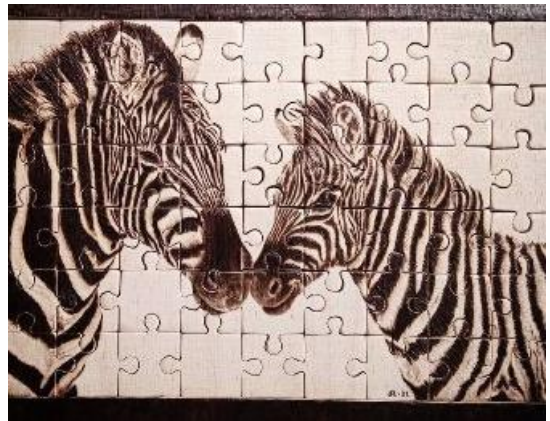
John

Some Members Work

Geoff Oliver

Show and

Tell boxes



Some great pyrography and scroll sawing
by Jennifer Langford



David Brooks' little

Round soprano ukulele

(Dave doesn't like keeping them simple!)

EDWC CLUB Workshop / Meeting Calendar			
Box Making (Combined with Inst making).	3 rd Saturday	9:30 AM	John Brownrigg
	2nd Wednesday with Inst making).	1:00 PM	Frank Camera
	4th Tuesday with Inst making).	6:30 PM	
Carving Group	1st & 3rd Friday	9.00 am	Alwyn Wainwright / Sandra Dean
Instrument Making (Combined with Box making).	2nd Wednesday	1.00pm	Frank Camera
	4th Tuesday	6.00 pm	
	3 rd Saturday (with box making)		
Open Workshop	Tuesday	9.30 am	Mark Thompson Key Holder
	2nd & 4th Saturday	9.30 am	
	Thursday	9.30 am	
Mentoring	Monday	9.30 am 12.30pm	Charlie Camera
	Evenings and Weekends to be advised.		
Pyrography Group	4th Sunday	9.30 am	Steve Mitchener
Scroll Saw Group	1st Saturday	9.00 am	Steve Mitchener
Woodturning	1st, 3rd & 5th Tuesday	7.30 pm 1.00pm	Brian Blethyn
	Thursday	9.00 am	Tony Orbe
	2nd & 4th Friday		David Cowan
Committee Meeting	3rd Wednesday	7.30 pm	Committee
Exhibition Committee	4th Wednesday	1.00 pm	Adrian DesFontaines
General Meeting	T.B.A	8.00 pm	T. B. A
Wes' Workshop	Wednesday	9.00 am	Wes Weight

EDWC Market Place

Lathe

Neville Haskett has a very substantial and high quality wood lather for sale as follows -

Woodfast 1000 Lathe plus wooden stand, 10 chisels, 2 X chucks, 3 tail pieces, Various finishing oils, asking price \$1500 Phone : 94661780.



Timber for Sale:

1 Piece of Rock Maple finished all round. Size 2200 x 130 x 30mm \$50.00

Ring Alwyn Wainwright

9455 2187

Machinery for Sale

Following lockdown and in the process of moving John Kinrade is again offering his remaining woodworking machinery for sale. Ph: 94319877

1) Pedestal Drill in good order. \$200 which includes a very good wheeled stand.

2) Woodman 12" planer. Needs blades sharpened (easy to get done ask me if interested). \$150.

3) large sander 150mm wide by 1220 and large disk (about 230 mm) \$220



4) Large table saw with sliding table. This item needs some attention (not serious) and if anyone is interested call Barry Lay. This will be the "bargain of the century" for someone with the space. It needs a new blade and the trunnion assembly needs a good clean. NOTE this is a picture from Google as it is clearer than the one I took. John's saw is same type. Also note that the wing on the right hand side folds down i.e. takes less space when not in use.



Planer/Joiner

LU DHA176 planer

I have an ELU DAH176 planer belonging to a friend at \$100. Originally it was also a thicknesser but that part is not serviceable though I have the parts to fix it (but not the desire to so). It works very well as a planer and is compact with wide capacity (336 mm = 13 1/4 inches). Anyone interested can try before you buy by contacting me, Charles Camera. Ph: 0413481699



More Timber

John Mentha has a quantity of timber for sale – contact john on 9439-8766.

- (1) Coolibah Slab - \$30

45 x 540 x 700



- (2) Redgum Slab - \$30

50 x 550 x 640



- (3) Eucalypt Burl - \$10

40 x 300 x 550

- (4) Eucalypt Burl - \$35

45 x 400 x 920

- (5) Eucalypt Burl - \$30

50 x 420 x 750



- (6) Redgum Slab - \$90

45 x 1000 x 1220



- (7) Redgum Slab - \$90

45 x 980 x 1300

- (8) Rosewood Slab - \$110

30 x 400 x 2120



- (9) Camphor Laurel Slab - \$95

38 x 460/650 x 1200

- (10) Assorted Tassie Oak - \$30

(includes 2 @ 19 x 245 x 2450)



- (11) Vic Ash - \$40

4 @ 15 x 170 - 10.5 metres

1 @ 19 x 116 x 1900

- (12) Ironbark (QLD) - \$35

5 @ 20 x 135 - 9.5 metres

- (13) Silver Wattle - \$45

4 @ 25 x 75 - 7.6 metres

3 @ 38 x 75 - 4.9 metres

