

Eltham and District Woodworkers Inc.



Newsletter Editor:

The next newsletter will come out at the end of March. Please forward any articles or information that you would like to go into newsletter to Richard Smith at richardasmith1955@gmail.com by the 27 March.

Next General Meeting:

Wednesday 5th March 2024 at 7:30 PM.

At Clubhouse, War Memorial Park,

448 Ironbark Road cnr. De Fredericks Road.

Yarrambat.

FROM THE SECRETARY'S DESK....

February 2024

Another month has flown by, this one felt like it was at the speed of light!

The obvious thing to mention first up is Colin's resignation as President. I know he has received many messages and phone calls from the membership, he has been surprised and pleased to hear from so many of you. He is in good spirits but did say at one point that it felt like he had lost an arm, figuratively speaking. Colin is not one to let the grass grow under his feet, and I have been the happy recipient of his homemade tomato sauce, chutney and berry jam.

I have taken over his duties in the interim until the AGM, and I apologise that I have not typed up the Committee report for you (hopefully by the time you receive the newsletter I will have that one ticked off my long list of 'to do's'). You never really know what someone is doing until they aren't doing it!

Let's just say I am working my way through things, and hopefully nothing significant slips through to the keeper.

In my summer hiatus I managed to get a lot of organisation done of club records etc. I do seem to accumulate a fair bit of it. At least now the membership application forms are sorted into current and non-current and alphabetized. The membership list that you receive matches exactly to the forms, although Tony Orbe had me looking for a missing person for a bit because our lists didn't match. And it was my list that was correct! (sorry Tony).

Maiké is working away on this year's Exhibition and is making some good progress. We have the dates set and the venue booked. This year the Exhibition will coincide with the Eltham Festival.

It has been nice to get back up to the club for me, and I must say there has been some fabulous progress on the shadow boards. Congratulations and thank you to everyone that is pitching in and helping with this project.

Peter Goddard has also made some great progress on his end grain identification board, I know he is being ably assisted by Hank Tyler. I look forward to seeing this really coming along.

You may have noticed just recently that there is a charming odour coming from around the back side of the building, another plumbing issue. The council have been notified, so hopefully it will be sorted sooner rather than later.

For those of you who I haven't bored to death about my new family member, I have another little lab pup, 9 weeks old. She is a feisty, cheeky little thing and I'm sure my older boy is wondering when she is going to go away! But in reality, they are having a great time chasing each other around and all manner of puppy shenanigans.

Until next time.....

Jane

Membership fees

At the February Special General Meeting changes were approved by members to the timing of the membership year for our club. This included one-off arrangements for this year as we transition to the changed membership year.

Previously the membership year was from 1 April each year to 31 March the next year. Our membership year has been changed to 1 July to 30 June the following year.

As part of the transition to these new arrangements members approved the payment in April this year of \$20 per member to cover the period 1 April 2024 to 30 June 2024. This fee needs to be paid during April to ensure members are financial and therefore protected by the club's insurance arrangements. An email will be sent to all members in early March requesting payment of the \$20 membership fee for the transition period.

At the May AGM members will decide on the membership fee which is to apply for the new 2024-25 membership year. An email will be sent to all members during May or June requesting payment of that year's fee by July 2024.

It's unfortunate that members have to make two payments this calendar year as part of the transition arrangements however it is important everyone is financial so they are covered by our insurance.

Eltham Sea Scouts

On a pleasant Thursday evening a group of Club members worked with the Eltham Sea Scouts to build more of Wes's fabulous bird houses. A very excited group of young scouts build and decorated their houses. Club members assisted with the build and were thanked

at the end of the evening. There is a certificate of appreciate from the scouts on display in the Clubrooms.



Mentoring Mondays

A busy month and lots of different people dropping in along with our regulars. We have had a bit of “a joint fest” with both the Domino machine and the Kreg jig in regular use. One new member, Kara, was delighted to find out how easy it was to joint up a picture frame with 6 mm dominos. Rod learned some new skills wrestling with compound joints on his sloping sided pot stand with mitres. Elsewhere Peter Gannon has joined the laser engraver enthusiasts after a trial portrait of his granddaughter’s dog shown below. Hopefully none of the pyrography people will be outraged by machine work rather than artwork.. So impressed was he that he is trialling a fancy software package, Lightburn (<https://lightburnsoftware.com/>), that will allow him to do marquetry by cutting out overlay components from veneer by laser. On the subject of marquetry, it has been some time since we have had an active group doing it and it would be good if we could engender more interest. Is there anybody else currently doing marquetry?

Saturday afternoon mentoring. We have tried running a mentoring session on Saturday afternoons but unfortunately turn up was close to zero and further sessions have been paused until further notice.



Peter's laser engraved dog portrait



Rod's Pot plant box

Club Timber on offer to members

The club has a stock of macrocarpa timber (Monterey Cyprus) in storage that is offered to members. The timber was milled from trees removed as part of the Gateway Project in Eltham. The council was persuaded to mill the trees into timber instead of firewood by the Eltham Historical Society president, Jim Conner. Jim wanted some for the EDWC to make the society a replacement memorial seat. This is currently and finally underway using the slabs that were beside the clubhouse. The timber was allocated to Men's Sheds and community groups as well as to the EDWC. Unfortunately, our boards, which we were allocated, were stolen and we finished up with leftover 200 mm wide by 70 mm fitches (the size of half sleepers as in the picture below).

Whilst less than convenient to use they are still extremely easy to re-saw on our large bandsaw and will yield very nice timber. They are very straight and can be resawn and thickness planed across the width to at least two boards 30 mm, or if done with skill three boards of at least 16 mm. The wood is as soft as pine but unlike pine is very outdoor resistant and excellent for outdoor projects as well as indoor furniture such as bedside cupboards etc. Note: no good for platters or cutting boards – also superb for carving.

The timber will be priced at a club donation of \$5 per metre (a very small fraction of the commercial value).

Please send your expression of interest to Jane (jane.hammett@hotmail.com) by March 9th.

If more is requested than is available there will be a ballot.

Pieces will be picked at random from the pile.

Most pieces have knots. There are 2 metre and 3 metre plus lengths. Three metres cannot be resawn on our bandsaw without being cut to a smaller length (around 2 metre max) !

Pick up is preferred from the storage site near Rivers of Yarrambat Nursery. Pick-up from the club may be arranged if there are volunteers to cart it.

A sample of the timber is on show in the kitchen.

More information -

[https://www.woodsolutions.com.au/wood-](https://www.woodsolutions.com.au/wood-species/softwood/macrocarpa)

[species/softwood/macrocarpa](https://www.woodsolutions.com.au/wood-species/softwood/macrocarpa)

Planed macrocarpa for the seat project – this piece has lots of knots



Macrocarpa timber available to members.

It is time to give all those who attend on Mondays a gentle prod. Every Monday after you have all left, Rod Gorfine goes through the workshop space sweeping and cleaning all the parts that you have neglected. I would love to see Rod walk through the workshop and feel no need to pick up a broom or brush! Please assist me in this goal! Thanks Hamish On Monday the 4th of March, at 10-00am, we are starting another making exercise, see photo attached. (if you missed the 4th, come along as soon as possible)

All interested members are welcome to have a bash at making something similar preferably with some hand tools and not just machines.



Skills Techniques and Safety ALL MEMBERS WELCOME

1-00 pm on Monday the 25th of March: - We will be looking at and discussing making scale models, prototyping and coming up with designs.

It would be wonderful if any members that have particular skills in this area, perhaps a CAD user could show off a bit also, get in touch with me and get involved on the 25th. Please give me a call 0428577878.

Hamish

Pyrography Group Sunday 28/1/2024

Had an early apology from Kirsten, and some of the regulars turned up to keep me company. There was Maïke producing one of her masterpieces. Which was a bush scene featuring a kangaroo which Maïke had “cobbled together” from a couple of random pictures.

Beryl was doing some more dark wooden coasters with Pyrography. It was much easier going this time as Beryl had tracked down some white graphite paper to transfer the pattern with. (I know what you’re thinking! White graphite paper? Is there such a thing? Is it possible? Well, it is possible. Beryl gave each of us a piece to prove it. And Beryl proved it works too.)

Kevin was burning a scene of ‘geese in a pond’ which was drawn by that renowned Australian pyrographic artist Sue Walters. Doing a real good job of it too. Then Kevin moved onto a silhouette of a branch against the moon.

We were also joined by Rowena and Jesse who were keen to have a go. So after a short tutorial on how, I gave them each a practice piece to play with. They both took to it like a duck to water. So, depending on their commitments in the future, there are a couple more to report on.

As for me, I burned a small Celtic knot pattern which I had drawn up as the training piece for today’s session. I didn’t have a meaningful project to work on, so this was handy to fill in the gaps between teaching and talking. Actually, got it finished, which surprised the life out of me.

Steve Mitchener.

Scrollsaw Group Sunday 11/2/2024

Busy group today. Had Scrollsaws and people everywhere.

Rowena cut out some house numbers to go on the wall of her house and her new letterbox. (Rowena got talked into building a new letterbox, as the beautiful number she had cut would look out of place on her crappy rusty one. Who said Scrollsawing wasn't inspirational?)

Chris Hand was cutting multi-piece children's puzzles out of 30mm thick Jelutong to sand and paint up. And Jesse was cutting a pattern in 19mm Pine and thinking of making it into a box lid. Happy to help that happen too. I love making boxes!

Tony was cutting the third gargoyle puzzle in the series of three. Bet you he will be glad when it's finished.

Kevin was tackling a teddy bear segmentation piece to decorate a box lid, then proceeded to cut the sides and base for it.

To keep me out of mischief we had Graham here discussing how to cut chess piece blanks on the scrollsaw so he could turn them. I agreed to work out a template for the Knight before the next session and show him how it's done. The cutting, not the turning.

Now the funny thing is, I didn't write down what I cut (if anything!), and I don't remember if I actually cut anything. So that means I have no more to say/write.

Steve Mitchener.

Pyrography Group Sunday 25/2/2024

This place sure got busy this morning in a hurry.

We had Kirsten working on a tiger picture on a disc of ply. (Another pattern from Sue Walters.)

Rowena was working on a large flower complete with a rather large bee on it in Pine.

Beryl was doing pirate decorations on a small chest. (It's a fit in your hand size, and no treasure inside it.) There was a pirate ship, skull and cross bones, and a flag. Looking quite cute.

'Masterpiece Maiké' was working on a shaped piece of ply with water lilies in a pond. Maiké powered through this piece all day.

Kevin was tackling a caricature of a pair of swaggies sitting on a log. This was also turning out well.

Chris Boylen brought in his own cheap bent wire Pyrography unit and used it on a test piece of a possum picture. And I'll have to stop being so disparaging of 'cheap' items, because Chris was getting very good results with his unit.

As for me, I had brought in a small box and was putting a random pattern all over it. Just something I wanted to try out. Wasn't looking too shabby either...

Just want to say that overall, the quality of what people are doing in this group is very good.

And as you can see from what's being produced above, the range of what they are producing is quite diverse. And we all have such a great time doing it. The banter is phenomenal. Looking forward to the next session already.....

Steve Mitchener.

Carving Group

The Carving Group continues to enjoy strong numbers into '24 with up to 9 keen carvers at our 2nd and 16th of Feb sessions in this short month. Rowena, one of our newees returned to improve her Viking figurine that Steve had started her with. She also spent some time experimenting in the world of chip carving, Meanwhile Steve added some more 'faces' to his whittling training kit ready for more new carvers as they join. Chris having mastered the clever 'ball in the box; turned his attention toward a spatula and matching salad server kit. Meanwhile, Maike continued to put finishing touches to her Dragon Lizard carving and finishing off her mid-sized gnome sitting on its silver birch base, and the ever-persistent David continued to refine his 'Leaning Man' out of Jelutong. Hank continues to have the bug for his hand held abstract sculptures made from Osage Orange with the total number in his collection now hovering in the 160 region! Peter surprised us with a project he's been working on called a Kumiko "Asanoho" Japanese lattice design used often for Japanese screens and for his purposes, as an inlay into a small box lid. He also spent some time working with the club's laser machine. Kevin continued on with his delightful floral relief carving, Jason his spoon collection and Bernie with his latest project, his European Chest featuring (as with his completed Jewellery Box) a myriad of intricate carving designs. For me, I spent my time on a fluted serving/tasting spoon made from huon pine and I cut out my next project, one of my favourites, a gnome character destined for my granddaughter.

Rod Gorfine on behalf of the carving group.

Turning Group (Thursday PMs) Report for February '24

The Turning Group had a productive month, with our Thursday PM sessions for Feb on the 1st, 15th and 22 of Feb '24. Our small band has been h/it hard though with Eric being absent most of the month due to sustaining a broken leg and being laid up. We send him our best wishes for a speedy recovery! Meanwhile back at the lathes. Peter is still developing his techniques with turning mallets, the one this time around was turned out of Indian Rosewood. He's also part of the carving group and is obviously wanting to turn the 'perfect mallet' for carving. Tom as always with a multitude of projects on the go turned out some beaut bottle coasters and then to help out some other club members, he turned some bench 'dogs' for the Festool Domino table. Very useful. Graham meanwhile has been honing his skill in turning bowls with 2 deep sided bowls turned: one from English Elm and the other from Camphor Laurel. I had an ordinary month with quite a few of my wood choices becoming destined for the fire grate. I'm constantly amazed when some pieces that 'look' sound enough turn up cracks / fault lines and even a hidden hole once you start turning them. Fortunately, I did have some good fortune with my old 'stand by' banksia nuts and was able to turn two small twing pots that my wife was keen on. I was also happy with a pen that I turned from New Guinea Rosewood.

Rod Gorfine on behalf of the Thursday Turners

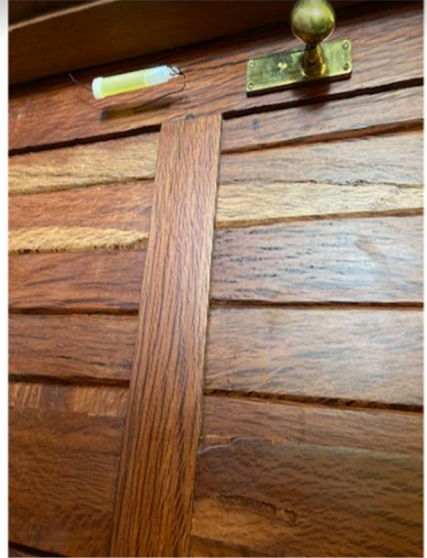
In Search of Ray

Ray Fleck (aka Medullary Ray) is an elusive figure. They (preferred pronoun) are distantly related to Ben, a fleck in the movie business and Béla who plays a bit of banjo. Ray hangs out in a wide array of timbers, English oak (*Quercus robur*) being a well-known example.

Ray likes to show off in some Australian timbers that are only oaks in the vernacular – ‘buloke’ and ‘sheoak’ (*Allocasuarinas*), northern silky oak (*Cardwellia sublimis*) and the main figure in this story, southern silky oak (*Grevillea robusta*).

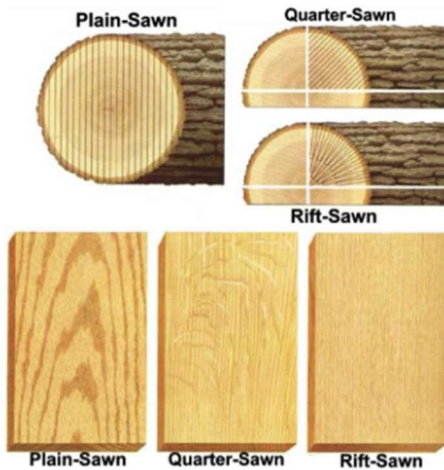


Medullary rays in English oak.



A buloke door.

During COVID times I bought sight unseen two slabs of SSO and upon collection during a break in the lockdowns discovered that they were plain-sawn. This was a problem as Ray is very particular as to how they present themselves. Ray is best seen when timber is cut perpendicular to the grain and so the face of quarter-sawn timber is where they hang out and show themselves to best advantage. I was so looking forward to meeting Ray, it was like being stood up on a date, so the timber was stashed out of sight and I found solace working with less particular timbers.



Medullary rays in Grevillea robusta.



My plain-sawn slab.

But over the Christmas break I decided to chase Ray down and uncover their hidden charms. The plan was to rip saw the slab parallel to the exposed end-grain and saw and plane off the resulting triangular waste wood to expose a quarter-sawn surface and thus Ray. Each strip of timber had a different angle of cut as the 'C' shape of the end-grain changed along its width. Not all the slab was ripped, just 900mm for this experiment.



Working out where to rip.



Some things are expensive to maintain and Ray fits that bill. The cross-section of the slab was 320mm x 30mm and from it four slim pieces of timber with Ray exposed were gained plus three less noteworthy pieces. Combined dimension of 160mm x 24mm, so 60% of the slab was wasted in pursuit of Ray.

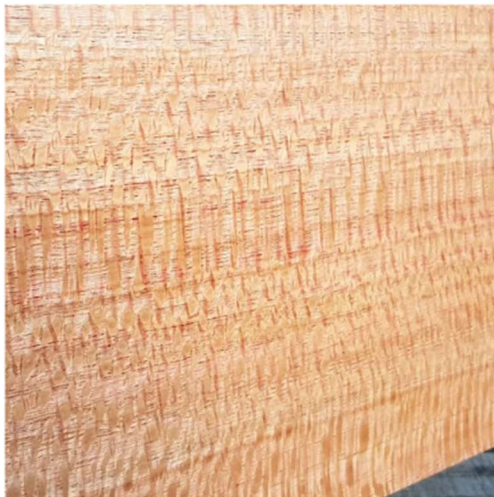


Ready to expose Ray.



Gotcha.

Was it worth the effort? Ray's figure is fantastic, subtle and alluring. It was satisfying to unlock the beauty within this otherwise drab and unremarkable slab. But buyer beware, since Ray is so particular as to how their best assets are exposed, quarter-sawn SSO is the only way to go.



Southern silky oak with Ray Fleck in all their glory.



Northern silky oak, the more flamboyant 'cousin'.

Hope you enjoyed this foray into *Grevillea robusta*, unless I receive a real spray another timber portrayal may be on the way.

Peter Goddard

P.S. Tasmanian Oak is so named because the three near identical species of eucalypts that come under this label were believed by the early timber workers in the forests of Tasmania to have the same strength as English oak. Strange, given that they are similar in colour and grain pattern to European ash (*Fraxinus excelsior*), thus the common names of Mountain ash and Alpine ash. Ray fleck is minimal.

P.P.S. Those who are partial to a drop know the importance of oak to wine making. French oak (*Quercus petraea*) is split vertically along the medullary rays and this makes it resistant to leakage as the rays act as a barrier to moisture movement. American oak (*Quercus alba*) is waterproof for a different reason. Ray is not involved.

DISCOUNTS

The following organisations will offer us a discount of the amount indicated to Club members.

- Britton Timbers 10%
- Mathews Timber 10% only on large quantities
- Oz Timber 10%
- Urban Salvage 5%-10%
- D.V. Mitre 10 10%
- "Pop's Shed" 10%

To get a discount you will have to show that you are a member of EDWI, either by wearing your name badge or club clothing or both.

- Timbecon A discount is offered but you will need a note on Club letterhead
 from Colin.

If you know of somewhere else where we can get a discount tell a committee member.

Potential Suppliers for Members

Listed below are some suggested timber suppliers within Melbourne metropolitan area. If you have other good sources let Richard Smith know so that they can be added to the list

Britton Timbers, Dandenong

<https://brittontimbers.com.au>

Contact: Brendon O'Brian

Mathews Timber, Kilsyth.....

<https://www.mathewstimber.com.au>

W R Timbers, Kilsyth.....

<https://wrtimbers.com.au>

Steve's Woodenstuff

<https://Woodenstuff.com.au>

0412 585 906

Shiver Me Timbers, Clayton.....
 (Sells new and Recycled Timbers)
<https://shivermetimbers.com.au>

Melbourne Timber Supplies, Deer Park.....
<https://www.melbournetimber.com.au>

Oz Timber, Thomastown.....
<https://oztimbers.com.au>

Australian Sustainable Hardwoods, Hayfield.....
<https://ash.com.au>

Cabinet Timbers, Braeside.....
<https://www.cabinettimbers.com.au>

Urban Salvage
<https://www.urbansalvage.com.au>

FOR YOUR INFORMATION:

Committee Members for Eltham and District Woodworks Club Inc.

Vice President	Raman Rao	0433 741 753
Secretary	Jane Hammett	0408 195 965
Treasurer	Dave Brooks	0438 344 024
Committee		
Peter Davey		0421 544 115
Aurora Messina		0401 866 859
Martin Ganter		0405 783 592
Richard Smith		0405 611 757

DATES FOR THE CALENDAR:

General meeting Wednesday 6 March
 Committee meeting Wednesday 20 March

Provisional working dates for:

WORKING BEES

Sunday 7 th April 9.00 – 12.30 followed by a BBQ

Sunday 7 th July 9.00 – 12.30 followed by a BBQ

Sunday 6 th October 9.00 – 12.30 followed by a BBQ

CHRISTMAS IN JULY

Sunday 27 TH July 12.30

Social Events

We are working towards some more social events throughout the year

These will be posted once they are set.

WORKSHOP SCHEDULE:

SUNDAY	MONDAY	TUESDAY	WEDNESDAY	THURSDAY	FRIDAY	SATURDAY
Second Sunday Scrollsaw 9.00 – 4.00pm Steve Mitchener 0409 003 487	Every Monday Mentoring 9.30am-11.30pm Charlie Camera 0413481699	Every Tuesday Open Workshop 9.00am-12.30pm Geoff Oliver 0417 375 782	Every Wednesday Wes' Exhibition Toy Making 9.30am – 12.00pm Wes Weight 0478 021 269	Every Thursday Open Workshop 9.00am-1.00pm Paul Rushton 0417 017 347 (Paul will also assist with Hands on Safety Training)	First & Third Friday Wood Carving 9.00am-3.00pm Rod Gorfine 0418 108 551	First & Third Saturday Open Workshop 9.30am-12.00pm Aurora Messina 0401 866 859
Third Sunday 1.00 – 4.00 Safety Training Hands on *Notify Martin if you wish to attend 0405 783 592	Fourth Monday Skills Techniques and Safety Session 1.00pm – 2.00pm Hamish Hill 0428 577 878 (An email prior to this session will be sent with details of subject matter)	Shane Watson 0410 850 074 Jane Hammett 0408 19 59 65	First Wednesday General Meeting 7.30pm @ the club rooms	Sylvester Konieczny 0407 009 951		Second & Fourth Saturday Open Workshop 9.00am – 12.00pm Toby Grant 0488 994 741
Fourth Sunday Pyrography 9.00am – 4.00pm Steve Mitchener 0409 003 487		Second & Fourth Tuesday Instrument Group 1.00pm – 4.00pm Frank Camera 0427 964 245	Third Wednesday Committee Meeting 7.30pm @ the club rooms	Every Thursday Wood Turning 1.00pm – 4.00pm Rod Gorfine 0418 108 551		Fifth Saturday Open Workshop 9.00am – 12.00pm TBA
						Second & Fourth Saturday 4.30pm Safety Training Hands off *notify Raman or Kevin if you wish to attend Raman Rao 0433741753 Kevin Sevier 0413 831 742